

## TURN-KEY INSTALLATIONS

### Our Experience = Less Downtime

*Over a three-day weekend, our road crew will perform a complete removal and installation of your liners and blades.*



*This was the fourth liner installation that I have been involved with here at New Holland, and it was by far the least stressful. Getting my blades and liners from the same people who were doing the installation simplified the process. The guys from Shumaker took control of the situation, overcame unforeseen challenges without frustration and turned my plant back to me on time as promised."*

Troy Eberly – New Holland Concrete



## CENTRAL MIX DRUM RESTORATION

Shumaker Industries can save you tens of thousands of dollars by rebuilding your worn out central mix drum.

- Main Gear Repair
- Main Gear Replacement
- New Steel Blades with Wrap-around Urethane
- New Urethane Drum Liners
- Increase Capacity by Lengthening Drum
- Repair Cracks in Drum

BEFORE



AFTER



**SHUMAKER**  
INDUSTRIES  
EST. 1953

924 WATER STREET • NORTHUMBERLAND • PA • 17857  
**800.326.9349** [www.shumakerindustries.com](http://www.shumakerindustries.com)



**SHUMAKER**  
INDUSTRIES  
EST. 1953

**PROFIT**  
*from our*  
**EXPERIENCE**

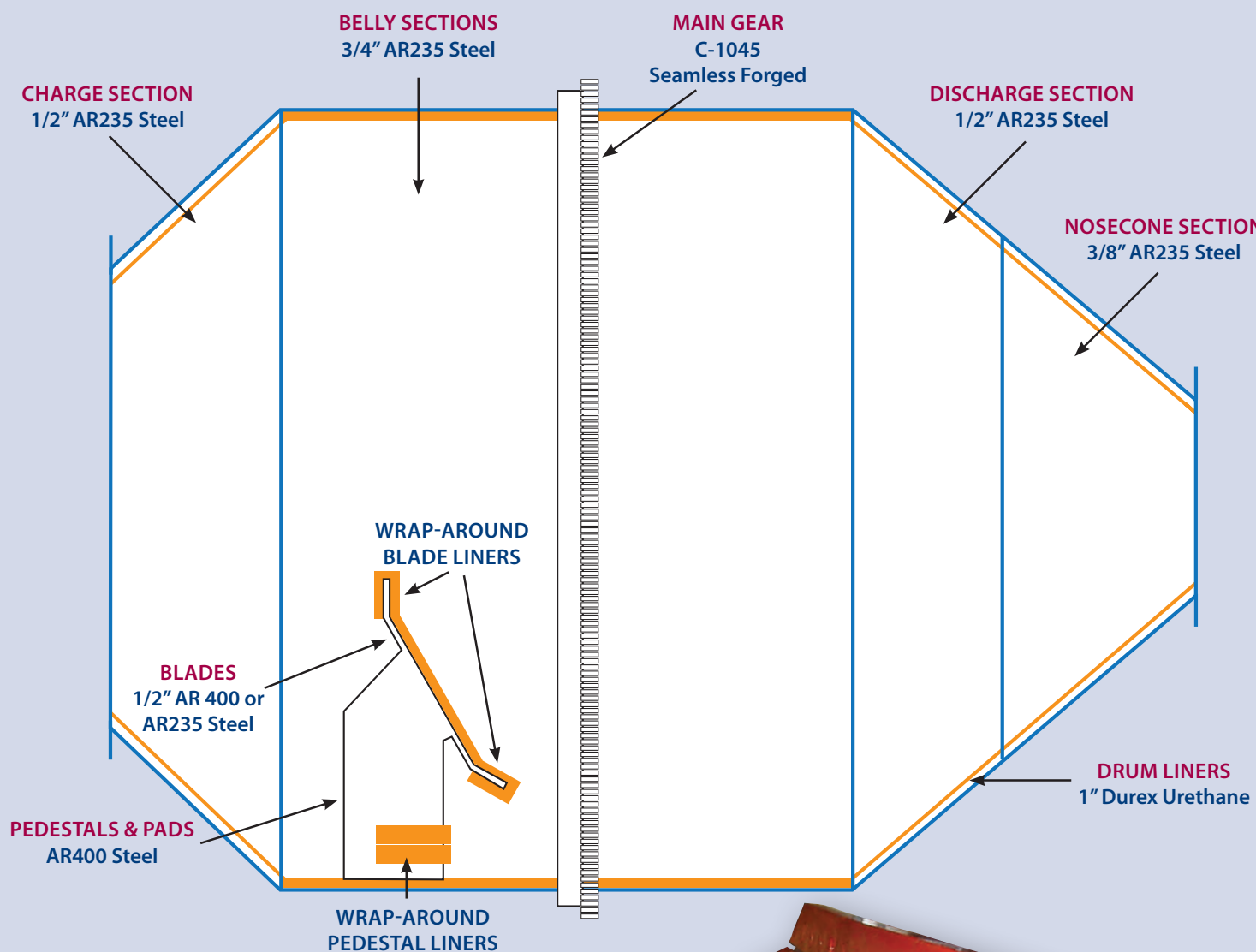
*Central Mix Drums and Durex Urethane Liners*





## CENTRAL MIX REPLACEMENT DRUMS

100% of the plate steel, forged main gear, and urethane are **MADE IN THE USA**

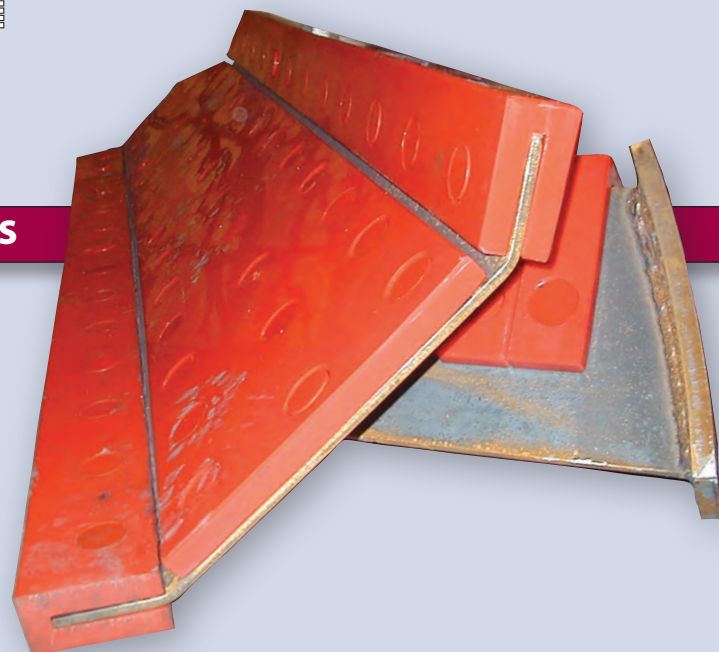


## STEEL CENTRAL MIX BLADES

100% of the steel is **MADE IN THE USA**

- Extra heavy pedestals using 3/4" AR400
- 1/2" AR235 or AR400 blades
- Durex wrap-around blade liners
- Durex pedestal wraps

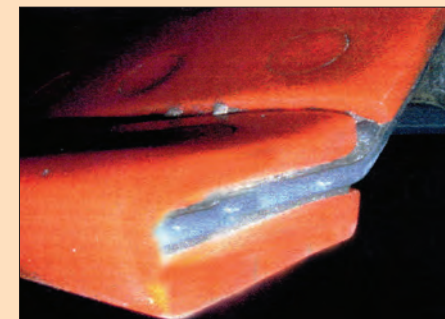
"For over 40 years I've used only Shumaker replacement mixer blades. Why? It's simple, they last."  
George Strickland, General Manager J.D.M. Material Co.



## URETHANE... IT'S NOT ALL THE SAME!

Much like 3000 PSI concrete vs. 6000 PSI concrete; to the untrained eye, it is difficult to tell the difference... Right Away.

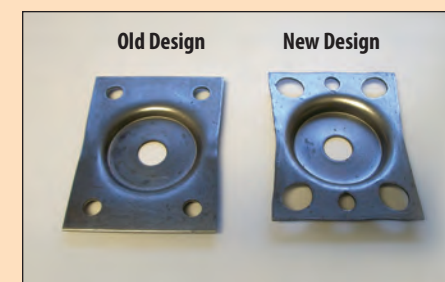
**DUREX HAS BEEN MANUFACTURING WRAP-AROUND BLADE LINERS SINCE 2003**



"We've been using urethane liners for many years, and these wrap-around liners are the first to stay on, with no wear or separation even after two years."  
Bob Trench – Osborne, Inc., Mentor, OH.



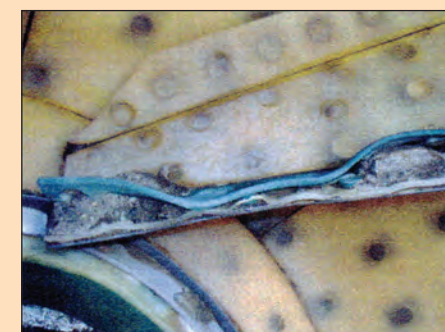
**IMPROVED WELD PLATES SINCE 2000**



To create more holding power, the Durex Weld Plates are engineered to allow more flow through and sit a 1/16" higher in the liner.



**OUR COMPETITORS' LINER**



No delamination.  
Durex liners are poured solid.

"These wrap-around liners are now in their fourth year, with over 100,000 yards per year."  
Tom Madala – Meyer Materials Company

**DUREX WRAP-AROUND LINERS AFTER 500,000 YARDS**



**HEAVY-DUTY 1 1/4" BELLY LINERS**

**Let us help you profit from 40% more wear life at about 4% more cost!**  
Shumaker Industries

**1" Thick Liner**

**1 1/4" Heavy-Duty Liner**

5/8" Consumable Material

7/8" Consumable Material

3/8" Below Weld Plate

3/8" Below Weld Plate