



DESIGNED AND BUILT EXCLUSIVELY BY



**SHUMAKER**  
INDUSTRIES  
EST. 1953

**Load and Go®**  
READY MIXED TRUCK WASH SYSTEM



# Load and Go Ready Mixed Truck

1

## CONSISTENTLY CLEAN MIXERS

Because the entire process is automated, the Load and Go Ready Mixed Truck Wash System can be dialed in to address the mess your plant is making while batching. Better yet, this process can be duplicated on every mixer with every load. The Load and Go uses 108 different nozzles that direct 1,000 PSI water jets to every inch of the mixer.

2

## SUB 3 MINUTE “BOOT TO GATE” TIME

The Load and Go routinely performs a systematic top-down, front-to-back wash allowing your drivers to be on the road delivering concrete in under 3 minutes from Boot-to-Gate. Additionally, the Load and Go eliminates the washdown area being the bottleneck even on dual-lane plants.

3

## IMPROVES SAFETY

The Load and Go allows the driver to safely remain in the cab during the washdown process. This eliminates exposure to slips, trips and falls related to this process and makes the job of operating a mixer truck a little easier.



# Wash System: 5 Proven Benefits



4

## CREATES LESS PROCESSED WATER

The Load and Go uses high pressure to blast the material off the mixer vs. the single hose using high volume to “flood” the build up until it washes away. The end result is 70-80% less processed water hitting the ground on every load.

5

## REDUCE WET LOADS

By automating the washdown process the Load and Go consistently adds 7-8 gallons of water to the mix.





# How the Load and Go Works

## DUAL CANTILEVERED FRAME

Frames are manufactured at our facility using aluminum and stainless steel, mounted on galvanized steel bases or concrete walls. Approximately 16' long x 15' wide footprint, including extended spray bars and dual cantilevered frame.

## MIXER POSITIONING SYSTEM

A series of electric eyes and lasers track the mixer as it is pulling through the wash rack. The system communicates the mixer position to the PLC which activates the correct wash sequence only when the mixer is in position. The mixer positioning system also communicates to the driver through an intuitive red/yellow/green signal light throughout the wash.

## 4-POSITION TRAFFIC LIGHT

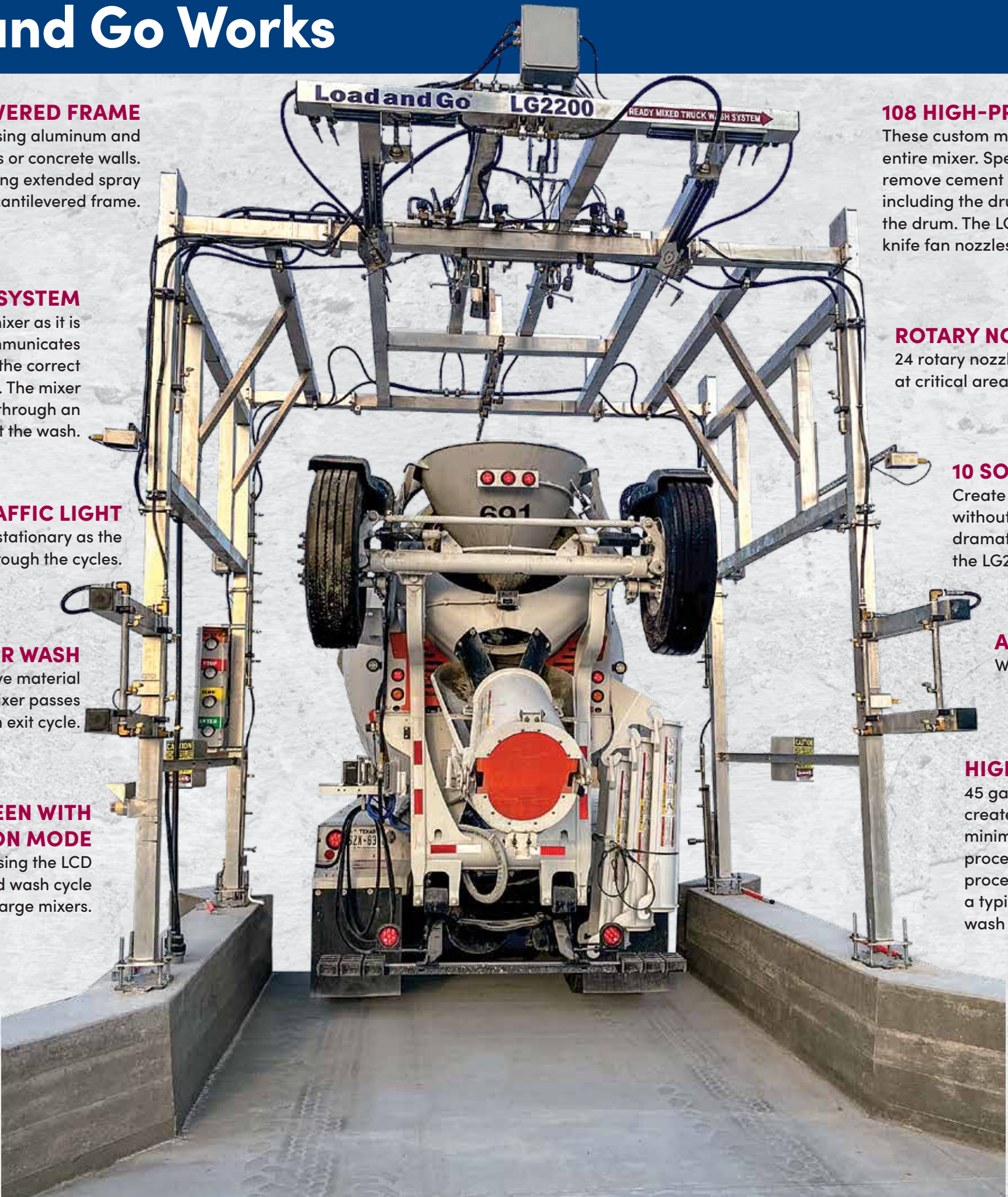
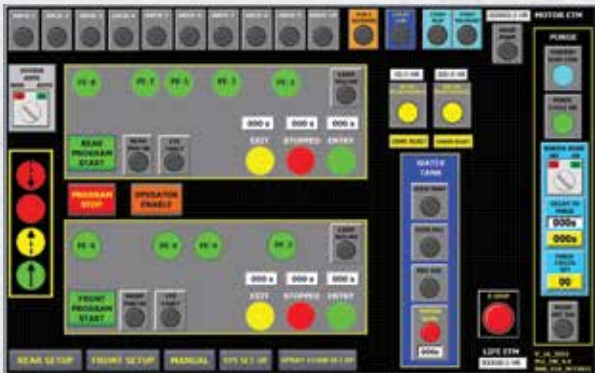
Notifies the driver when to move or remain stationary as the wash process runs through the cycles.

## DEDICATED WHEEL / SIDEWALL / FENDER WASH

High pressure turbo nozzles are directed to remove material from the wheels, sidewalls and fender as the mixer passes through the wash system exit cycle.

## PROGRAMMABLE TOUCH SCREEN WITH WINTERIZATION MODE

Easily program your wash for maximum efficiency using the LCD Touch Screen Control Center. Independent automated wash cycle programs customizable for front or rear discharge mixers.



## 108 HIGH-PRESSURE NOZZLES

These custom machined nozzles deliver 1,000 PSI water jets to the entire mixer. Specifically designed and precisely aimed nozzles remove cement dust and batch plant mess from all areas of the mixer including the drum, hopper, chutes, fenders, and discharge blades in the drum. The LG2200 uses a combination of turbo, direct bore, hydro knife fan nozzles and stabilized rotary nozzles.

## ROTARY NOZZLES

24 rotary nozzles on 7 custom designed brackets are aimed at critical areas on the mixer.

## 10 SOLENOIDS

Create the effect of a moving gantry-style wash system without having moving parts. Utilizing high flow nozzles dramatically increases the range and impact pressure on the LG2200.

## AUTO-REFILLING WATER RESERVOIR

With in line self-flushing filters.

## HIGH EFFICIENCY PUMP

45 gallon per minute pump creates enormous impact while minimizing water usage. This process creates 70-80% less processed water compared to a typical 5-10 minute manual wash down.





# What Our Clients Are Saying

# Load and Go History

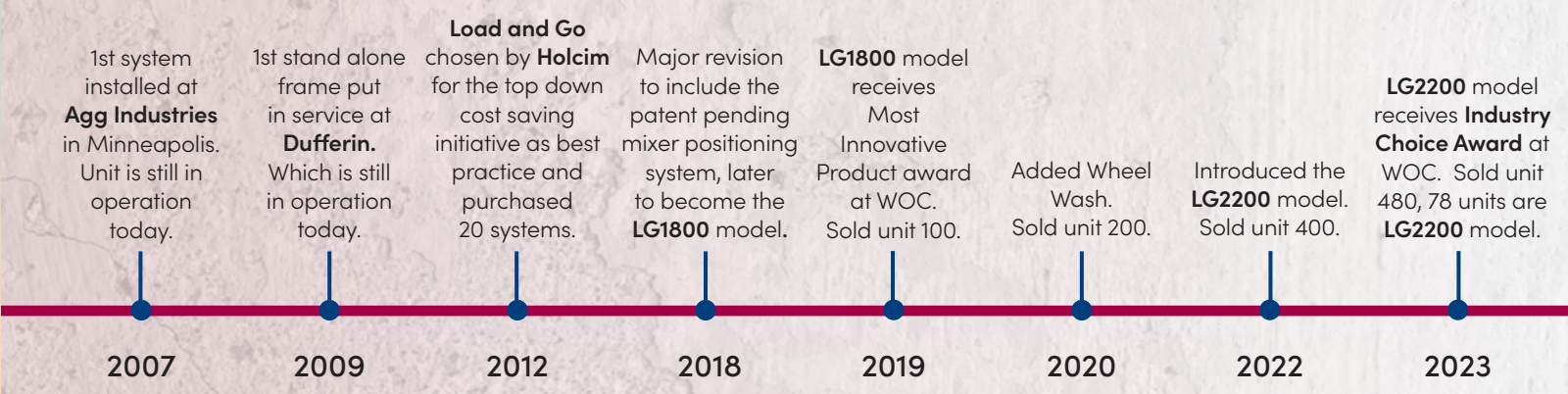


“We truly believe that the Load and Go concept is a gift from God and we thank Him for His blessing. We also want to thank our current customers for testing prototypes, offering suggestions/feedback, and trusting in us to keep their fleet looking good. It is this trust that inspires our team to build the highest quality, most capable equipment that we could dream up. Today the Load and Go Ready Mixed Truck Wash System is that dream.”



**Brett Shumaker**  
Shumaker Industries

## From napkin drawing, to proven concept, to Industry Best Practice.



## Providing solutions to the ready mixed industry for 70 years.

Shumaker Industries is a genuine American success story. Roy Shumaker spent World War II welding in the Baltimore shipyards. After being discharged from the Navy, he worked building underground storage tanks. A friend had some ready mixed concrete drums that needed repairing, and Roy agreed to give it a try. After a few years of doing these small repair jobs, Roy realized that he could do this full-time and started his own business.

In January 1953 Roy and Jean Shumaker moved to Northumberland, PA and founded the Norry Welding Company. Norry Welding specialized in rebuilding concrete mixer drums in the Mid-Atlantic region, and was the first company to specialize in fabricating drums for all makes and models of mixers. Roy retired in 1979 and his son, Doug, became president of Norry Welding. In 1989 Doug decided to change the company name to Shumaker Industries and expand the business. As the dream continued, the company opened a branch in Greenville, South Carolina to serve the southeastern region of the United States and eventually diversified into producing all new mixer drums. Today, Brett Shumaker is the third-generation owner of the business and has had the privilege of leading the company’s diversification by introducing the completely automated **Load and Go Ready Mixed Truck Wash System®**.



“I can confidently say that automating the washdown process keeps our fleet looking better, gets our mixers out of the gate more quickly, and has greatly helped with the processed water issues we were having. The Load and Go has been a good investment and we look forward to adding several more in the near future.”

**Jeff Cathey**  
Maschmeyer Concrete  
Lake Park, FL

“We put our Load and Go in after seeing it at the World of Concrete. The biggest return we have seen is the ability to get the loaded trucks out of the yard fast. Plus Q.C. has an easier time dealing with one plant operator to keep the slump accurate without drivers adjusting each load.”

**Joe Zignego**  
Zignego Company  
Waukesha, WI

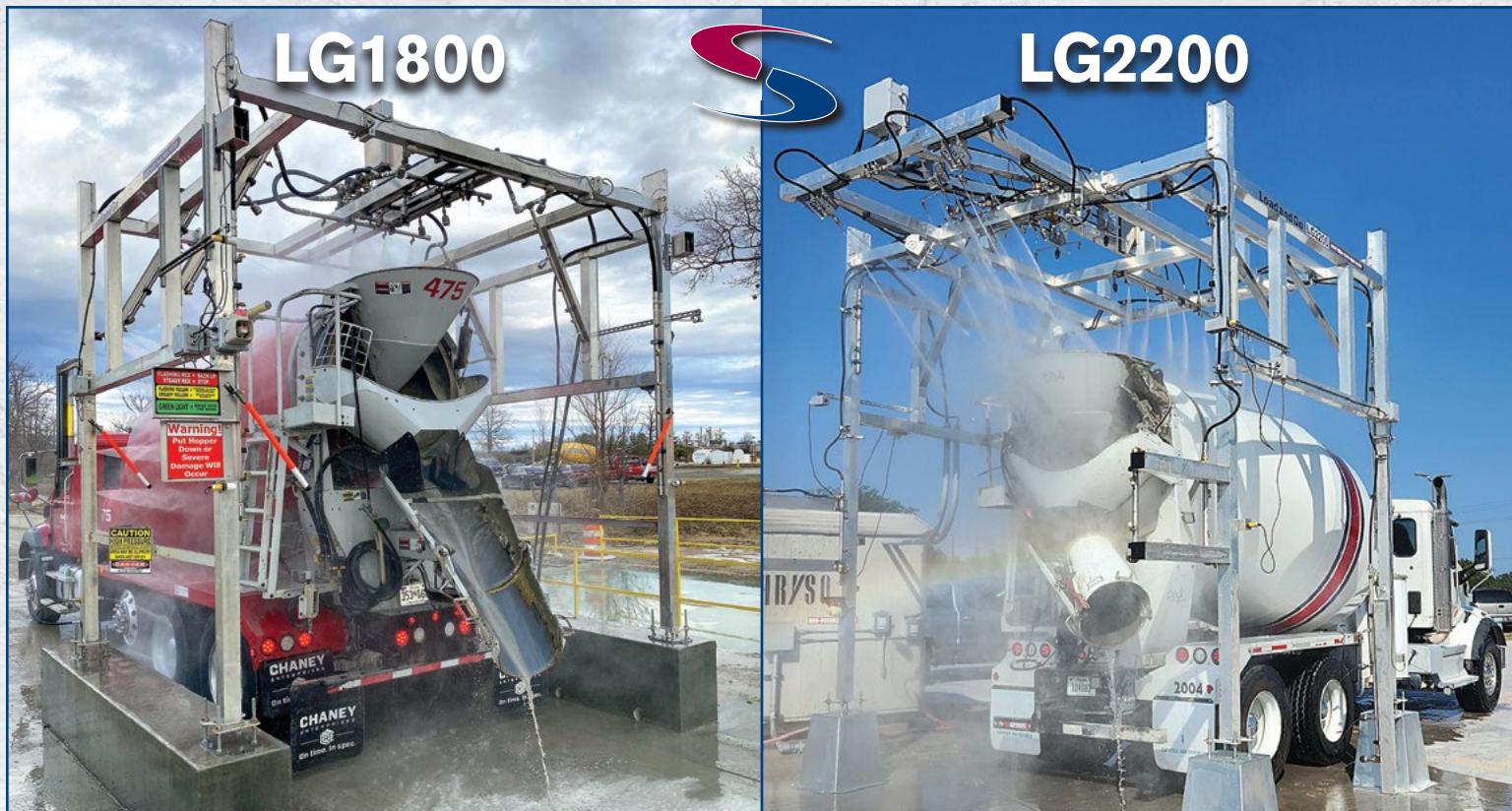
“We have calculated time savings of over 12 minutes per load since we installed our Load and Go under our central mix plant. We are getting a lot less wet loads and creating a safer work place for our drivers. Putting in a Load and Go was a great idea!”

**Buddy Jenkins**  
Allied Concrete Co.  
Charlottesville, VA

“At first some of the more veteran drivers were skeptical, but once we got our Load and Go dialed in... it didn’t miss a spot. Now the drivers love the Load and Go and I love seeing clean mixers leaving the yard instead of 3-4 drivers washing down with a hose at the slump rack.”

**Roger Lawshe**  
Sierra Ready Mix  
North Las Vegas, NV





# LG1800

# LG2200

## LOAD AND GO FEATURES & BENEFITS

## LG1800

## LG2200

Blasts Residue from Front & Rear Discharge Trucks	✓	✓
Fabricated Aluminum Frame	✓	✓
Increased Frame Height to Accommodate Hopper Up	X	✓
Dual Cantilevered Frame	X	✓
Mixer Positioning System	✓	✓
Drivers Stationary During Hopper Wash Sequence	✓	✓
45 Gallon Pump / 1000 PSI	✓	✓
10 Programmable Wash Cycles	X	✓
Winterization Mode	✓	✓
108 Custom Machined Nozzles	X	✓
Turbo; Hydro Knife Fanned; Direct Bore; Stabilized Rotary	X	✓
10 Solenoids	X	✓
Focused Attack on the Hopper	Attacks hopper in one phase, reaching 2 fins deep	Attacks hopper in a combination of multiple phases, reaching 3 fins deep
Dedicated Window and Mirror Wash	X	✓
Sidewall / Fender / Wheel Wash	✓	✓
Amount of Water Introduced Into The Mix	7-8 gallons	7-8 gallons
Improves Safety and Saves Money	✓	✓
Industry Accolades	Most Innovative Product Winner at World of Concrete in 2018	Innovative Product Industry Choice Winner at World of Concrete in 2023
Boot-To-Gate Time	Sub 3 minutes	Sub 3 minutes



# Load and Go<sup>®</sup>

## READY MIXED TRUCK WASH SYSTEM



MADE WITH PRIDE IN AMERICA BY A COMPANY WITH 70 YEARS EXPERIENCE IN THE READY MIXED INDUSTRY



924 Water Street • Northumberland • PA 17857 • 800-326-9349 • [www.shumakerindustries.com](http://www.shumakerindustries.com)